



RIPPA GROUP

DUMP TRUCK RD06



PERFORMANCE

A BUCKET

The buckets are thickened and detachable, and different buckets can be replaced according to the environment.

B PROTECTIVE PLATE

The upper side of the cylinder is equipped with a mounting plate and a guard plate to prevent the goods from falling and hitting the cylinder, which will aggravate the wear and damage of the cylinder.

C OIL WINDOW

The oil tank is equipped with a hydraulic oil window, which can effectively observe the state of the hydraulic oil and replace the hydraulic oil in time.

D TRACK WHEELS

The rollers and guide wheels adopt double bearings and double support retaining rings, and spacers are installed to prevent foreign objects from entering the interior, aggravate wear, and ensure the service life of the wheels.



EASY TO OPERATE AND MAINTAIN

The shroud is semi-wrapped, which effectively isolates heat, and has a more beautiful appearance. The large air vent ensures the intake of the engine and the exhaust of hot air in the cabin.

Use Briggs & Stratton single-cylinder engine 2100, with large torque, high speed, electronic control, and double start by hand.

The high-quality engineering rubber shock absorber is adopted, with good shock absorption effect, and the thickness of the engine bottom plate is up to 10mm.



The walking lever is an operating lever, and a single lever can realize forward, backward, steering and other actions, which is convenient for operation, and has high and low speed functions.

The upper side of the gear pump is equipped with a protective plate to prevent the gear pump and oil pipe from being damaged due to falling cargo. Reduce maintenance times and ensure the stability of power output.

The pedals can be folded and turned upside down, effectively saving space. There are anti-skid holes on the surface, and edge guards are installed around them to prevent slipping and falling accidents during work.

PRODUCT DETAILS



Bucket



The retractable bucket design ensures that items enter the compartment and improves work efficiency

EXHAUST VENT



The exhaust port is located on the side of the machine, effectively preventing the random discharge of exhaust gas

PROTECTIVE COVER



Installing a protective cover can effectively prevent the engine from overheating and damage the driver

HYDRAULIC CYLINDER



Split-pipe operation with multiple hydraulic cylinders for compound action

ENGINE



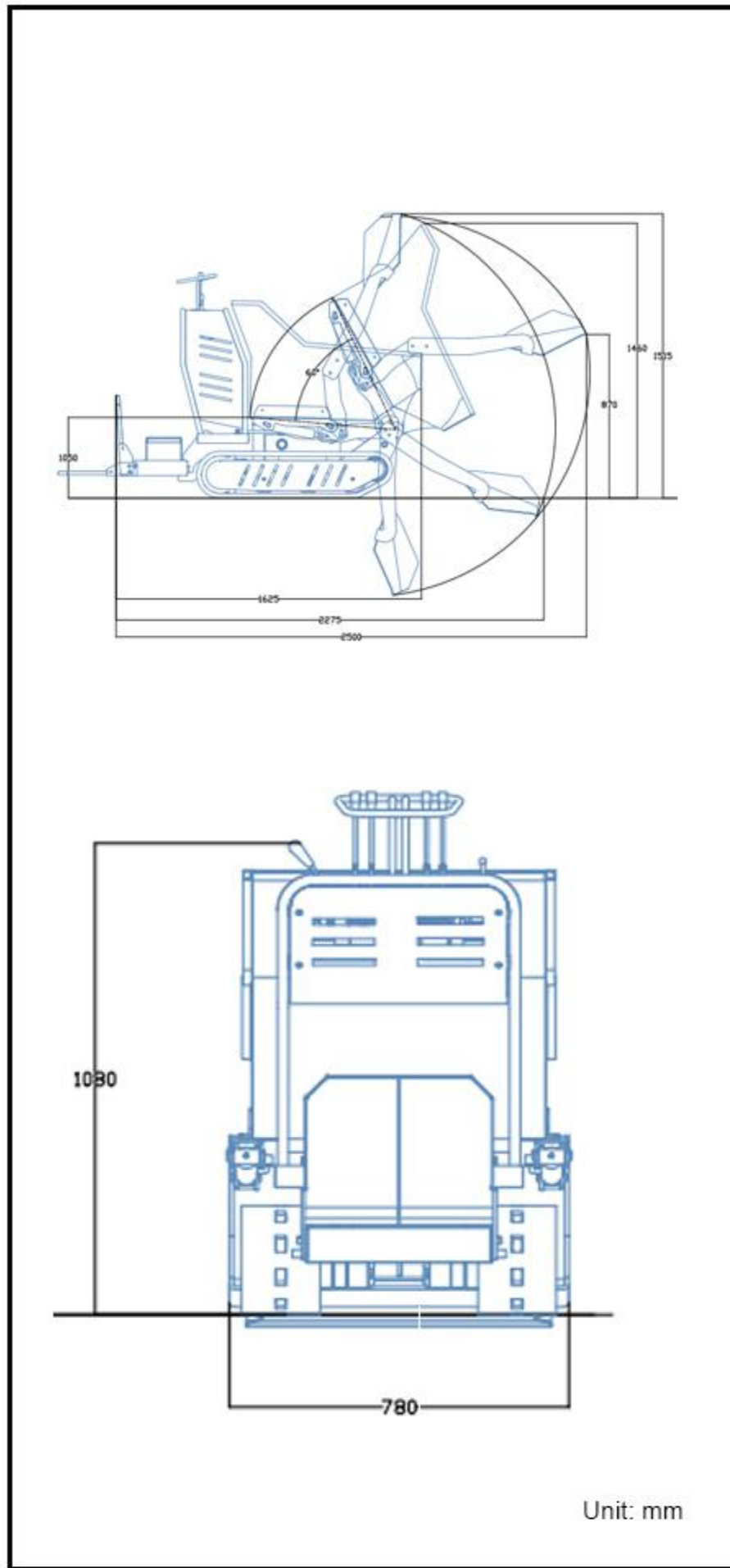
Using the brand engine, it runs smoothly and has strong power

BUTTER SPOUT



Grease nipple with central lubrication

■ SCOPE OF WORK



■ SPECIFICATION

	Model	Unit	RD06
Basic parameters	Machine operating weight	lb (kg)	1139.6 (518)
	Bucket capacity	ft³ (m³)	1.06 (0.03)
	Dump capacity	ft³ (m³)	9.5 (0.27)
	Rated load mass	lb (kg)	770 (350)
	Travel speed low/high speed	mph (km/h)	0-1.24/0-2.48(0-2/0-4)
	Gradability	%	30%
	Ground pressure	psf (kpa)	408.4 (19.55)
	Maximum unloading height	in (mm)	14 (356)
	Maximum unloading distance	in (mm)	10.7 (272)
	Minimum ground clearance	in (mm)	2.8 (70)
Engine	Engine brand	in (mm)	Briggs & Stratton
	Engine model		XR2100
	Maximum horsepower	(ps)	13.6
	Maximum power	hp(kw)	13.4 (10)
	Maximum speed	(rpm)	3600
	Displacement	gal (L)	0.11 (0.42)
	Number of cylinders		1
	Cooling method		Air-cooled
	Engine oil change amount	gal (L)	0.32 (1.2)
	Fuel form		Gasoline
	Fuel grade		92#
	Theoretical fuel consumption		0.8-1.2
Body	Transport length	in (mm)	65.7(1670)
	Transport width	in (mm)	30.7 (780)
	Transport height	in (mm)	47.2 (1200)
	Bucket width	in (mm)	27.6 (700)

■ HYDRAULIC SYSTEM

Main pump type/model	Gear pump PGP51044SLP
Main pump brand	Tianjin Walking
Main pump maximum flow (L/min)	14.4+14.4
Multi-way valve - left	Double multi-way valve
Multi-way valve brand	Tengfei
Multi-way valve - right	Double multi-way valve

Multi-way valve brand	Tengfei
Rated set pressure (Mpa)	16MPa
Maximum set pressure (Mpa)	18MPa
Travel hydraulic motor type	Deston BM5-200
Travel motor brand	Deston
Motor displacement	200

- Please read the instruction manual carefully and use the machine correctly.
- Always wear a seat belt when working. (ROPS specifications only)
- If you are operating construction machinery with a machine mass of less than 3 tons, you must take the "Special Training for Vehicle-Mounted Construction Machinery Operation" course beforehand. If the machine mass is 3 tons or more, you must take the "Vehicle-Mounted Construction Machinery Operation Skills Course".
- To prevent breakdowns and accidents, be sure to inspect the machinery regularly.
- Specific voluntary inspections are required to be carried out by an inspection company registered with the Minister of Health, Labor and Welfare or the Director-General of the Labor Standards Inspection Bureau.

WE ARE RIPPA

Shandong Rippa Machinery Group Co., Ltd. is located in the sixth industrial park of Jining High-tech Zone, Shandong Province. It is a state-owned high-tech enterprise with import and export rights.

The company's employees are energetic and enterprising, constantly creating the legend and fame of the rippa!



Shandong Rippa Machinery Group Co., Ltd.

Address: No. 6 Industrial Park, 2166 Chongwen Avenue, Gaoxin District, Jining City, Shandong Province

Some specifications are based on engineering measurements and may differ from actual conditions. Specifications are for comparison purposes only and are subject to change without notice. Specifications of individual RIPPA devices may vary due to normal variations in design, manufacturing, operating conditions and other factors. Some images of RIPPA devices are not limited to standard packages.



www.rippa.com